

CRIMILDE

Group I



FLEXIBLE AND PROFITABLE

- **FLEXIBLE AGRONOMY**

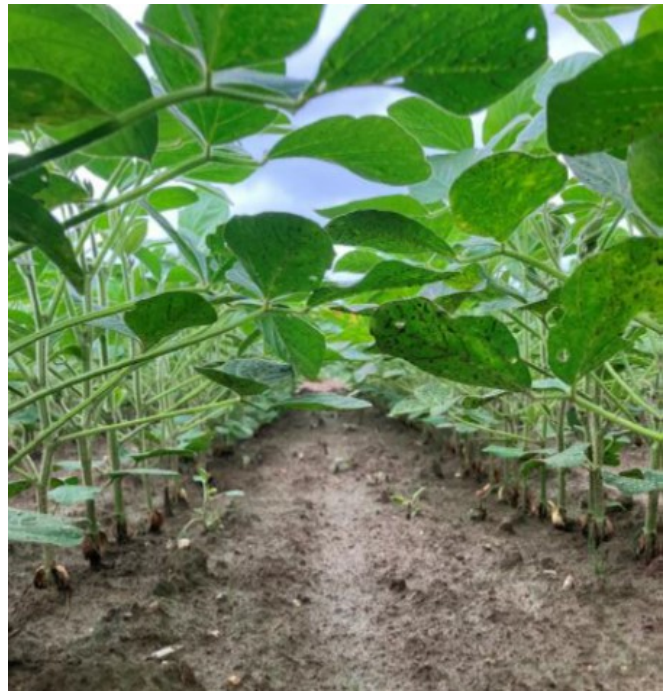
Adaptable and productive in all environments even in difficult conditions

- **FLEXIBLE FOR SOWING TIME**

Adaptable to any sowing time

- **FLEXIBLE FOR SALES**

White fiber and high solubility of the protein



Characteristics

Maturity **1-**

Flower colour **Purple**

Hilum colour **White**

TKW **Medium**

Protein content **37 - 39 %**

Oil content **High**

Plant height **Medium**

First pod height **Medium**

Growth type **Half-indeterminated**

Agronomy

Soil coverage

9

Ramification capacity

9

Early vigor

8

Standability

8

Drought tolerance

7

1-3 sensitive - poor | 4-6 medium - good | 7-9 tolerant - excellent

Yield performance

Italian official results 112% (5,4 t/ha) 2024
Romanian results 103 % (5,0 t/ha) 2024

Sowing period adaptation

	Early	Optimal	Late	2nd crop
Adaptation	4 on 4	4 on 4	2 on 4	0 on 4

Growing recommendations

Density at harvest	50 - 55 Plants/m ²
Sowing depth	3 - 4 cm
Pre-inoculation	<p><p>The shelf life of the inoculum is 80 to 90 days with a storage temperature of 18°C. Lower temperature storage has a positive impact on the lifespan of rhizobia on seeds. We recommend a temperature below 25°C for storage and transport of pre-inoculated seeds.</p></p>

The results and recommendations given in this document are the values based on MAS Seeds R&D network and are intended for general guidance. We cannot assume any liability for the future achievement of these values, as the individual results and the performance may vary in different local growing, soil and weather conditions.